



Product Information

ExcelDye™ 6X DNA Loading Dye, Orange

DL1000 **5 ml × 2 (Orange, 6X)**

Storage

4°C for 12 months

-20°C for 36 months

Working Reagent Preparation

1:6 dilution per DNA electrophoresis sample.

(1 µl loading dye for every 5 µl DNA sample)

We Bring The World Of Biotechnology To You



www.bocascientific.com

(781) 686-1631

info@bocascientific.com

Description

SMOBIO's ExcelDye™ 6X DNA Loading dye (Orange) is a pre-mixed buffer for tracking DNA samples during electrophoresis on agarose or polyacrylamide gels. It contains **Orange G** which helps with the tracking of DNA migration. The **Orange G** migrates at approximately 30 bp on a standard 2% TAE agarose gel (50 bp on 1% TAE agarose gel). The included glycerol helps keep DNA at the bottom of the well, and the presence of EDTA chelates any divalent metal ions to prevent the process of a metal-dependent nuclease.

Composition

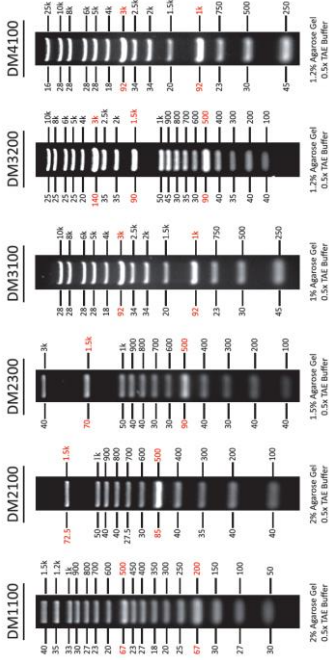
0.15% Orange G
10 mM Tris-HCl (pH 8.0)
60% glycerol
60 mM EDTA





ExcelBand DNA Ladders

DNA Mass (ng/ 5 μ l) / Base Pairs (bp)





FluoroBand DNA Ladders

