



## Product Information

### ExcelDye™ 6X DNA Loading Dye, Blue

**DL3000      5 ml × 2 (Blue, 6X)**

## Storage

4°C for 12 months

-20°C for 36 months

## Working Reagent Preparation

1:6 dilution per DNA electrophoresis sample.

(1 µl loading dye for every 5 µl DNA sample)

We Bring The World Of Biotechnology To You



[www.bocascientific.com](http://www.bocascientific.com)

(781) 686-1631

[info@bocascientific.com](mailto:info@bocascientific.com)

## Description

SMOBIO's ExcelDye™ 6X DNA Loading dye is a blue pre-mixed buffer for tracking DNA samples during electrophoresis on agarose or polyacrylamide gels. It contains two dyes (Xylene cyanol FF and Bromophenol blue) for tracking the DNA migration. The Xylene cyanol FF and Bromophenol blue migrate at approximately 800 bp and 150 bp on a standard 2% TAE agarose gel (4,000 and 500 bp on 1% TAE agarose gel). The included glycerol helps keep DNA at the bottom of the well and the presence of EDTA chelates any divalent metal ions to prevent the process of a metal-dependent nuclease.

## Composition

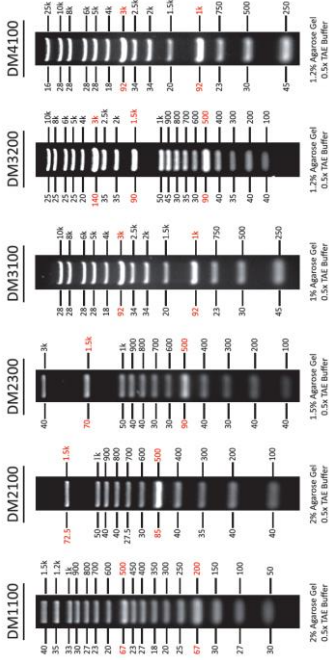
0.03% Xylene cyanol FF  
0.03% Bromophenol blue  
10 mM Tris-HCl (pH 8.0)  
60% glycerol  
60 mM EDTA





## ExcelBand DNA Ladders

DNA Mass (ng/ 5 $\mu$ l) / Base Pairs (bp)





## FluoroBand DNA Ladders

