



SMOBio
Small Bio, Smart Tool

Product Information

ExcelBand™ series

All Blue Regular Range Protein Marker (9-180 kDa)

PM1500

Size: 250 μ l \times 2
5 μ l per well for 100 applications

Storage

4°C for 3 months
-20°C for 24 months

Loading Volume

- **3 μ l** or **5 μ l** per loading for clear visualization during electrophoresis on a 15-well or 10-well mini-gel.
- **1.5~2.5 μ l** per well for general Western blotting transfer.
- Apply more for a thicker (> 1.5 mm) or larger gel.

Description

The PM1500 ExcelBand™ All Blue Regular Range Protein Marker is a blue protein standard with 10 pre-stained proteins covering a wide range of molecular weights from 10 to 180 kDa in Tris-Glycine buffer (9 to 170 kDa in Bis-Tris (MOPS) buffer and Bis-Tris (MES) buffer). Proteins are covalently coupled with a blue chromophore, and two reference bands (at 25 kDa and 72 kDa, respectively) are enhanced in intensity when separated on SDS-PAGE (Tris-Glycine buffer).

The PM1500 ExcelBand™ All Blue Regular Range Protein Marker is designed for monitoring protein separation during SDS-polyacrylamide gel electrophoresis, verification of Western transfer efficiency on membranes (nitrocellulose, PVDF, or nylon) and for approximating the size of proteins

The marker is supplied in gel loading buffer and is ready to use. **Do NOT heat, dilute, or add reducing agent before loading.**


Contents

Approximately 0.1~0.5 mg/ml of each protein in the buffer (20 mM Tris-phosphate (pH 7.5 at 25°C), 2% SDS, 0.2 mM Dithiothreitol, 3.6 M Urea, and 15% (v/v) Glycerol).

Guide for Molecular Weight Estimation

Migration patterns and approximate MWs (kDa) of PM1500 ExcelBand™ All Blue Regular Range Protein Marker in different electrophoresis conditions are listed below:

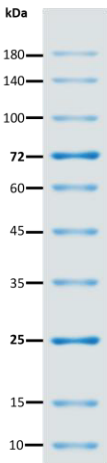
Band	Color	TRIS-GLYCINE	BIS-TRIS (MOPS)	BIS-TRIS (MES)
1	Blue	180	170	170
2	Blue	140	130	130
3	Blue	100	93	93
4	Blue	72	68	70
5	Blue	60	53	53
6	Blue	45	41	42
7	Blue	35	30	30
8	Blue	25	22	23
9	Blue	15	14	14
10	Blue	10	9	9





SMOBio
Small Bio, Smart Tool

ExcelBand™
All Blue Regular Range Protein Marker
PM1500



Note. The apparent molecular weight (kDa) of each protein has been determined by calibration against an unstained protein standard; supplemental data should be considered for more accurate adjustments in different electrophoresis conditions.

Quality Control

Under suggested conditions, PM1500 ExcelBand™ All Blue Regular Range Protein Marker resolves 10 major bands in SDS-PAGE (Tris-Glycine, MOPS, and MES buffer) and after Western blotting transfer to a nitrocellulose membrane.

Other information

SMOBIO Technology, Inc. claims all warranties with respect to this document, expressed or implied, including but not limited to those of merchantability or fitness for a particular purpose. In no event shall SMOBIO Technology, Inc. be liable, whether in contract, tort, warranty, or under any statute or any other basis for special, incidental, indirect, punitive, multiple or consequential damages in connection with or arising from this document, including but not limited to the use thereof.

Caution: Not intended for human or animal diagnostic or therapeutic uses.