

SaliFix™ Saliva Swab DNA Collection Kit

Increasing numbers of saliva samples are being collected remotely from study participants for use in genetic testing, so the need for safe, simple and easy to use sample collection, stabilization and transportation is growing rapidly.

Studies have shown that DNA samples from swabs can degrade rapidly without the correct stabilization. SaliFix™ Collectors contain 1ml of preservation reagent that is designed to maintain DNA integrity and yields whilst preventing bacterial growth long term, yet provides an easy device for Saliva DNA collection, stabilization, and transport.

SaliFix™ Collectors are specifically designed for collecting Saliva samples in various environments including at home, in clinic or remotely. The foam swabs effectively maximize saliva collection, even from donors who may find it difficult to produce saliva.

The SaliFix™ kit also includes the Swab-Catcher format for improved Sample Handling

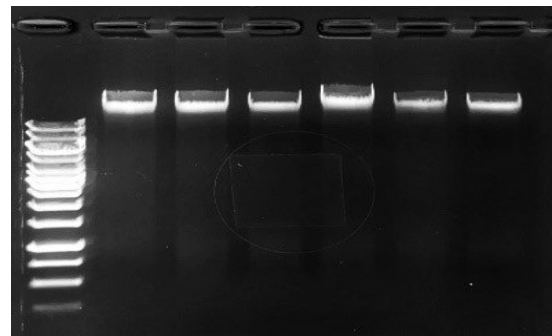
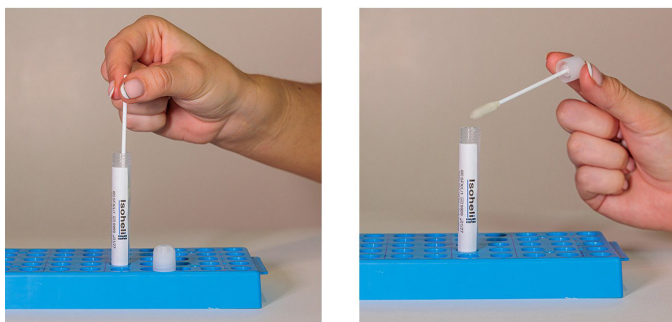
The NEW Swab-Catcher™ tube simplifies sample processing and cuts down on cross-contamination as the cap holds the swab tightly after screwing the cap onto the tube. This removed the tedious process choice of having to cut the swab tip and or manually using tweezers to remove the swab prior to processing. This makes the tube ideal for high-throughput processing using automated instruments, and further the tubes are barcoded for easy sample tracking.

Swab-Catcher™ tubes are leakproof and fully transport tested to 95kPa to allow mailing and storage, and the reagents are non-hazardous.

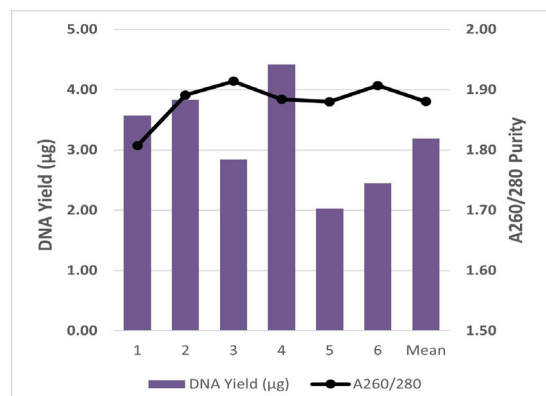


Key Benefits

- ✓ All-in-one saliva DNA collection, stabilization, and transport device
- ✓ Uses the NEW Swab-Catcher for easy handling and automated-processing
- ✓ Simple collection at home, in clinic. A viable alternative to blood collection
- ✓ Instant stabilization maximises DNA yields allowing RT shipping and storage in a non-hazardous format
- ✓ Optimized for extraction using Isohelix DNA extraction and other kits



Agarose gel analyzed by electrophoresis. Saliva DNA isolated from SaliFix™ collection devices using the Isohelix Saliva-Prep-2 kit (GSPN-50), shows high quality DNA with no degradation.



DNA collected using SaliFix™ collectors is of high yield and purity, and suitable for all downstream analyses.

Product Information

SFX/LS/1/50 SaliFix™ saliva collection tubes prefilled with 1ml SaliFix™ buffer and individually wrapped, foam saliva swabs

Available in packs of 50 units